



**REGIONAL SPECIALISED METEOROLOGICAL CENTRE-TROPICAL CYCLONES, NEW DELHI
TROPICAL WEATHER OUTLOOK**

DEMS-RSMC TROPICAL CYCLONES NEW DELHI DATED 24.07.2021

TROPICAL WEATHER OUTLOOK FOR NORTH INDIAN OCEAN (THE BAY OF BENGAL AND ARABIAN SEA) VALID FOR NEXT 120 HOURS ISSUED AT 0600 UTC OF 24.07.2021 BASED ON 0300 UTC OF 24.07.2021.

BAY OF BENGAL:

YESTERDAY'S WELL MARKED LOW PRESSURE AREA OVER NORTHWEST BAY OF BENGAL OFF NORTH ODISHA – WEST BENGAL COASTS MOVED INLAND BY THE SAME EVENING. IT LAY AS A LOW PRESSURE AREA OVER JHARKHAND & ADJOINING NORTH CHHATTISGARH WITH THE ASSOCIATED CYCLONIC CIRCULATION EXTENDING UPTO 5.8 KM ABOVE MEAN SEA LEVEL AT 0300 UTC OF TODAY.

A FRESH LOW PRESSURE AREA IS LIKELY TO FORM OVER NORTH BAY OF BENGAL & NEIGHBOURHOOD AROUND 28TH JULY, 2021.

SCATTERED LOW AND MEDIUM CLOUDS WITH EMBEDDED INTENSE TO VERY INTENSE CONVECTION LAY OVER NORTH & WEST-CENTRAL BAY OF BENGAL AND NORTH ANDAMAN SEA. SCATTERED LOW AND MEDIUM CLOUDS WITH EMBEDDED MODERATE TO INTENSE CONVECTION LAY OVER REST OF BAY OF BENGAL & SOUTH ANDAMAN SEA.

PROBABILITY OF CYCLOGENESIS (FORMATION OF DEPRESSION) DURING NEXT 120 HRS):

24 HOURS	24-48 HOURS	48-72 HOURS	72-96 HOURS	96-120 HOURS
NIL	NIL	NIL	NIL	NIL

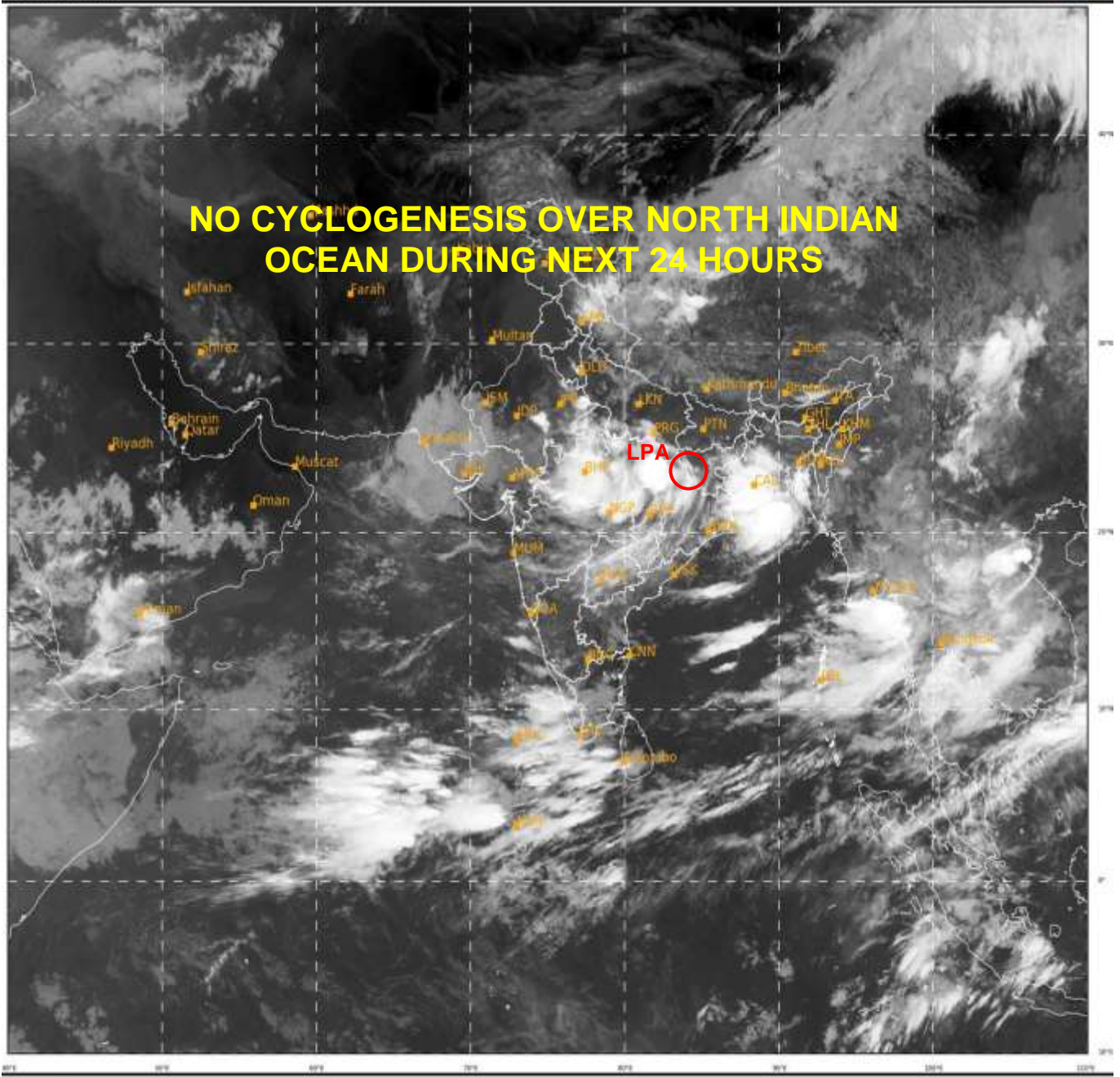
ARABIAN SEA:

SCATTERED LOW AND MEDIUM CLOUDS WITH EMBEDDED INTENSE TO VERY INTENSE CONVECTION LAY OVER SOUTH-CENTRAL ARABIAN SEA. SCATTERED LOW AND MEDIUM CLOUDS WITH EMBEDDED MODERATE TO INTENSE CONVECTION LAY OVER EASTCENTRAL & SOUTHEAST ARABIAN SEA OFF KERALA COAST & N/HOOD AND COMORIN REGION. SCATTERED LOW AND MEDIUM CLOUDS WITH EMBEDDED ISOLATED WEAK TO MODERATE CONVECTION LAY OVER REST OF ARABIAN SEA.

PROBABILITY OF CYCLOGENESIS (FORMATION OF DEPRESSION) DURING NEXT 120 HRS):

24 HOURS	24-48 HOURS	48-72 HOURS	72-96 HOURS	96-120 HOURS
NIL	NIL	NIL	NIL	NIL

REMARKS: NIL



395

927

IMD, DELHI